

Film Manufacturing Shop



Medical Image Printing Terminal



Qualification Certification



Medical Thermal-sensitive Film

Product Features

This product uses blue polyester sheet base as support body, double-sided coating, one side coating back layer, the other side coating heat-sensitive imaging layer and protective layer. The film is fit for thermal printer to print digital image which is processed and stored in the computer, and can reproduce all kinds of medical images. It is suitable for the output of medical digital images such as CR, DR, CT, MRI. The film has the characteristics of low fog, high definition, bright hue and convenient use. It can be directly used in the output of Fuji, Agfa and other brand thermal printers on the market.

Product Property

Size and Shape: The dimension is cut according to the specification and the dimension tolerance is ± 0.5 mm. The bulk sheet has a rectangular shape, the shape of the rolled sheet is in the form of a roll, and a gap or a fillet or other shape is punched according to the requirements of the customer.

Apparent Mass: Product surface clean, no adhesion, smooth edges, no burrs, no coating without coating, no drawing, channels, bubbles, sandholes and mechanical scratches and other defects.

Operating Requirement

The optimum environment is temperature 18°C~24°C, relative humidity 50% ~ 65%. Hands should be kept clean during operation, not contaminated with sewage, oil or chemicals to prevent contamination of film and sensitizer screen. After opening the box, use soft brush cleaning to avoid dust, paper scraps and other objects affecting the imaging.

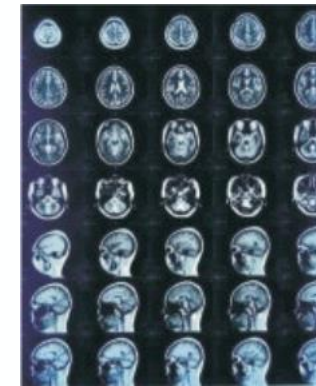
Storage Conditions

Please store the film in cool and dry place without dust. Keep away from direct sunlight, acid or alkaline gas. Details as follows.

1. Temperature and humidity: temperature 10°C - 25°C, humidity 40% ~ 65%. keep away from the heat resource.
2. Gas: there are no hydrogen sulfide, ammonia, carbon dioxide and other acid and basic gases.
3. Pile: please keep film upright to avoid the bad influence caused by pressure.
4. The film in the course of transportation must not be sun, rain, strong ultraviolet radiation and severe vibration.

Specification Packing

Size		Package	
inch	centimetre	sheet/box	boxes/carton
8x10	20x25	100	5
10x12	25x30	100	5
11x14	28x35	100	5
14x17	35x43	100	5



Medical Inkjet Film

Product Features

The film is made of nano-scale raw materials, advanced coating technology and ink jet emulsion or material coated on one side or both sides of the transparent film base. The film has the characteristics of low fog, high definition, bright hue, easy to use, fine print image, high resolution and so on. It is suitable for CR, DR, CT, MR, DSA, and it can look directly under natural light, no silver halide chromogenic agent, non-toxic substances. It can meet the requirement of high-precision medical image, and is environment-friendly.

Product parameters

Application Department	Radiology department, such as CR, DR, CT, MR, DSA, etc.
Imaging Color	Black-and-white
Product	Non-photosensitive film with the same appearance as traditional transparent blue-based film
Feature/Suitable Type	Can be directly used in the market of Epson, Canon and other brand printers output

Operating Requirement

The optimum environment is temperature 18°C~24°C, relative humidity 50% ~ 65%. Hands should be kept clean during operation, not contaminated with sewage, oil or chemicals to prevent contamination of film and sensitizer screen. After opening the box, use soft brush cleaning to avoid dust, paper scraps and other objects affecting the imaging.

Storage Conditions

Please store the film in cool and dry place without dust. Keep away from direct sunlight, acid or alkaline gas. Details as follows.

1. Temperature and humidity: temperature 10°C~25°C, humidity 40%~65%, keep away from the heat resource.
2. Gas: there are no hydrogen sulfide, ammonia, carbon dioxide and other acid and basic gases.
3. Pile: please keep film upright to avoid the bad influence caused by pressure.
4. The film in the course of transportation must not be sun, rain, strong ultraviolet radiation and severe vibration.

^A Specification Packing

Size		Package	
inch	centimetre	sheet/box	boxes/carton
8x10	20x25	100	5
10x12	25x30	100	5
11x14	28x35	100	5
13x17	33x43	100	5
14x17	35x43	100	5



Medical Laser Film

Product Features

Medical laser film is made by coating photosensitive material on one side of the transparent sheet base. It is composed of polyester (PET) substrate coated with silver salt and protective layer. This film has the characteristics of low fog, high definition, bright hue and convenient use. Medical laser film has the advantages of accurate imaging, better color level transition, and can output chromatic and black-and-white images, which can be used to record medical images for clinical diagnosis.

Product Parameters

Application Department Radiology department, such as CR, DR, CT, MRI, DSA, 3D imaging, etc. Imaging Color black-and-white and chromatic
Thickness 180µm
Discrimination Rate 2400 x 2400dpi
Storage Period image save time > 30 years
Suitable type Can be directly used in the market printers, such as Fuji Xerox camera output

Operating Requirement

The optimum environment is temperature 18°C~24°C, relative humidity 50%~65%.

Storage Conditions

Please store the film in cool and dry place without dust. Keep away from direct sunlight, acid or alkaline gas. Details as follows.

1. Temperature and humidity: temperature 10°C-25°C, humidity 40%~65%, keep away from the heat resource.
2. Gas: there are no hydrogen sulfide, ammonia, carbon dioxide and other acid and basic gases.
3. Pile: please keep film upright to avoid the bad influence caused by pressure.
4. The film in the course of transportation must not be sun, rain, strong ultraviolet radiation and severe vibration.

Specification Packing

Size		Package	
inch	centimetre	sheet/box	boxes/carton
8x10	20x25	100	5
10x12	25x30	100	5
11x14	28x35	100	5
13x17	33x43	100	5
14x17	35x43	100	5



Medical Printing Film

Product Features

The surface of this product is flat and smooth, double-sided anti-slip and anti-static treatment, greatly improve the output accuracy and efficiency. The product has the advantages of good color reproduction, high saturation, strong picture reduction level and excellent printing precision. It can clearly display images and text, suitable for output of medical images, which truly reproduce various medical images.

Product Parameters

Laser/Inkjet Color Film

Classification Porcelain white. Semi-clear

Thickness 25/150/180µm

Application Department B-ultrasound, ophthalmology, endoscopy, pathology, stomatology, etc.

Imaging Color Black-and-white and chromatic

Suitable Type OKI-711/712, OKI-C532dn; can also be directly used in the market HP, EPSON Epson and other brand printers output Storage

Environment Please store the film in cool and dry place without dust. Keep away from direct sunlight, acid or alkaline gas. Storage

Temperature Temperature 10°C - 35°C humidity 30% ~ 65%

Quality Guarantee Period 2 years

Specification Packing

Size		Package	
inch	centimetre	sheet/box	boxes/carton
A4	210x297	100	30
A3	297x420	100	15
B5	182x257	100	30
16K	195x270	100	30

