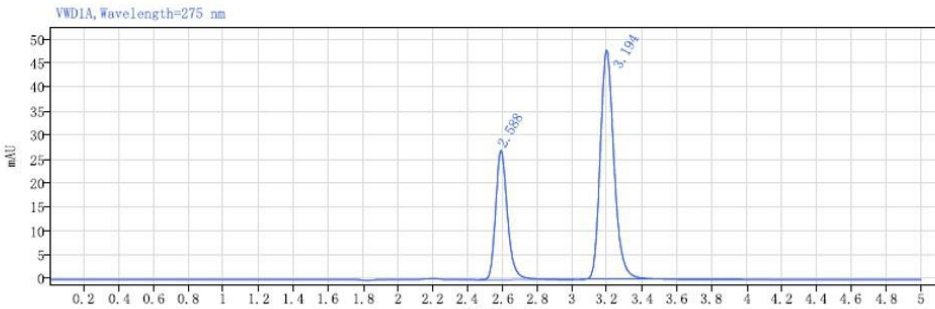


Comparison of HPLC detection results: Neocide® PC300 VS Sigma-Aldrich Proclin™300

single injection



data: 2020-10-10 11-20-50 (GMT +08-00)-02.dx
Sequence No: 201010-02 **project:** LC12601I
Sample: Neocide ®PC300 **manipulator:** Admin
equipment: LC1260 **Sampling date:** 2020/10/10 11:21:34 (GMT +08:00)
Sampling volume: 5.0 **position:** PIB2
Acquisition method: PC300.amx **type:** sample
processing method: Area percentage-200318 **Sample content:** 0.00
Manual modification: none



Neocide®PC-300

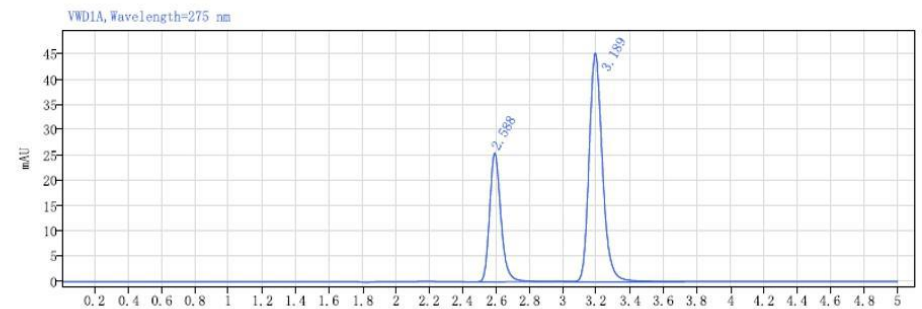
signal: VWD1A, Wavelength=275 nm

time[min]	type	peak width[min]	peak area	height[mAU]	peak area%
2.588	BB	0.54	127.21	26.97	32.47
3.194	BB	0.92	264.51	47.82	67.53
总和			391.72		

single injection



data: 2020-10-10 11-15-02 (GMT +08-00)-01.dv
Sequence No: 201010-02 **project:** LC12601I
Sample: R20010610-17 **manipulator:** Admin
equipment: LC1260 **Sampling date:** 2020/10/10 11:15:43 (GMT +08:00)
Sampling volume: 5.0 **position:** PIB1
Acquisition method: PC300.amx **type:** sample
processing method: Area percentage-200318 **Sample content:** 0.00
Manual modification: 无



Sigma-Aldrich Proclin™300

signal: VWD1A, Wavelength=275 nm

time[min]	type	peak width[min]	peak area	height[mAU]	peak area%
2.588	BB	0.55	120.35	25.56	32.57
3.189	BB	0.71	249.13	45.26	67.43
总和			369.48		